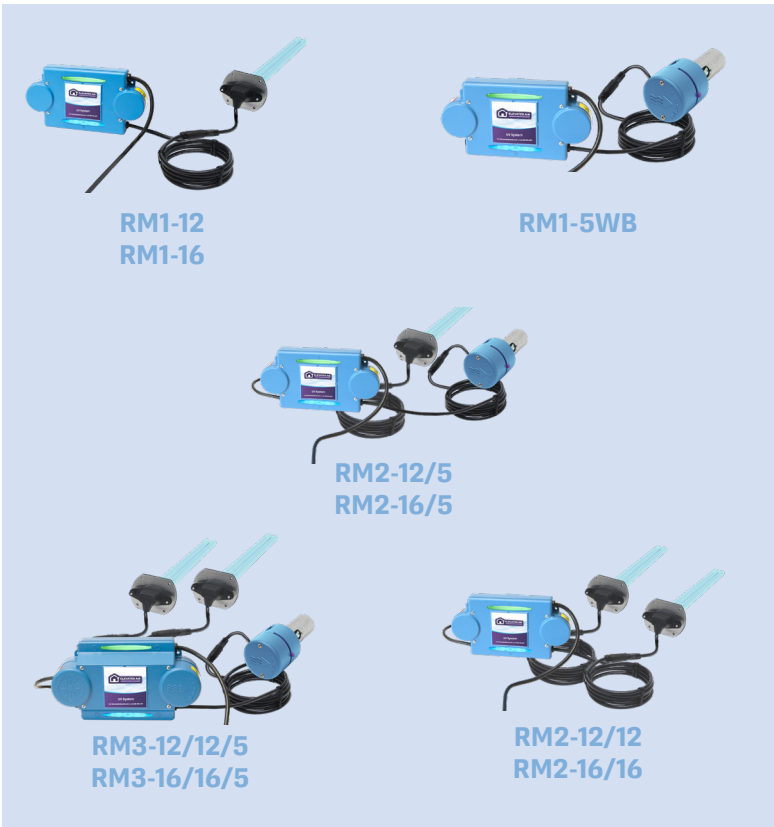




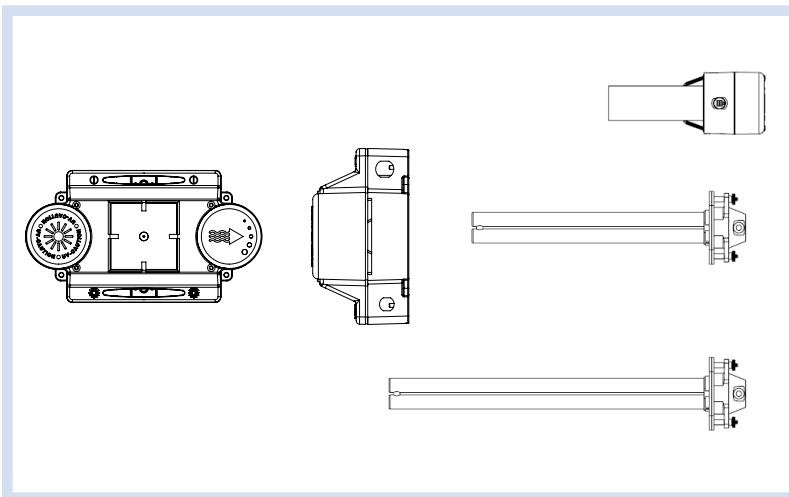
REMOTE MOUNT
ACTIVE BIOFORCE DEFENDER™
GERMICIDAL UVC AND OXIDATION UVV SYSTEMS

Versatile Whole-House Solutions to Control Allergens, Germs, and Odors

- Controls allergens that cause allergic and asthmatic episodes
- Controls or destroys organisms such as mold spores, bacteria and viruses
- Controls odors created by pets, smoke, solvents, and carpets
- One lamp controls bacteria, viruses, and mold spores, while the other oxidizes gases and removes odors
- Heat sink housing design dissipates heat from electronic components for improved reliability and extended ballast life
- 16" UVC lamp is 330% more powerful than standard lamps
- Special coated lamps reduce solarization, tripling lamp life
- Patented oxidizing chamber for precise control of output
- Auto sensing ballast works from 120 VAC to 277 VAC 50/60Hz
- LED power and lamp monitors let you know the system is working properly
- Low static pressure drop lets blower run efficiently
- Limited lifetime warranty on electronic components; 3 year warranty on lamps
- 27,000-hour lamps require replacing only once every 3 years



Active BioForce Defender™ Germicidal UVC and UVC/UVV Systems offer a versatile full line of whole-house air purification solutions that install directly into the central heating and cooling system ductwork or plenum. The high intensity UVC lamp disinfects the air by neutralizing airborne pathogens such as bacteria, viruses, and mold spores. According to the EPA, combined use of filtration and germicidal UVC light is an effective means of preventing the distribution of airborne viruses in occupied spaces. With ultraviolet light, micro-watts translate to effectiveness. Sixteen-inch (16") UVC lamps produce a very high output of 180 micro-watts @ 1 meter which is significantly higher than most UVC lamps on the market. Twelve-inch (12") UVC lamps produce 150 microwatts @ 1 meter.



PERFORMANCE DATA

Electrical Input	110-277V/1/50-60 Auto Sensing
UV Lamp 16" (3 Year)	36 watt, 180 μw/cm ² @1 meter
UV Lamp 12" (3 Year)	24 watt, 150 μw/cm ² @1 meter
UV Lamp 7" (3 Year)	21 watt, 80 μw/cm ² @1 meter
UVV Lamp 5" (3 Year)	8 watt
Activated Oxygen Generation	50 mg per hour max

Website: ElevatedIndoorAir.com

Phone: (239)-ELE-VATE (353-8283)

PARTS & ACCESSORIES

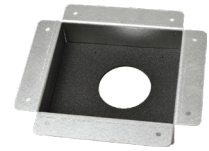
LSK-36-16	36W Replacement H Lamp (3 Year) 16" only
LSK-24-12	24W Replacement H Lamp (3 Year) 12" only
LSK-21-7	21W Replacement H Lamp (3 Year) 7" only
LSK-36-16-RF	36W Reflex Replacement H Lamp (3 Year) 16" only
LSK-24-12-RF	24W Reflex Replacement H Lamp (3 Year) 12" only
LSK-36-16-O3	36W Spliced Replacement H Lamp (3 Year) 16" only
LSK-25403-16	Replacement Lamp Kit (16" & 5")
LSK-25403-12	Replacement Lamp Kit (12" & 5")
LSK-25403-16-RF	Reflex Replacement Lamp Kit (16" & 5")
LSK-25403-12-RF	Reflex Replacement Lamp Kit (12" & 5")
UVV5CL	UVV Replacement Lamp (3 Year) 5" only
500423-OS	FM Offset Duct Board Adapter Plate Kit (optional)
500484-16-MG (16")	16" Lamp Reflector for Mount Plate w/ magnetic mount (optional)
500484-16 (16")	16" Lamp Reflector for Mount Plate (optional)
500489-12-MG (12")	12" Lamp Reflector for Mount Plate w/ magnetic mount (optional)
500489-12 (12")	12" Lamp Reflector for Mount Plate (optional)
BL-710-RM1	Replacement Ballast for RM1
BL-710-RM2	Replacement Ballast for RM2
BL-710-RM2-100W	Replacement Ballast for RM2 - 100 watt unit w/ dual 16" or 12" lamps
FCS003	Current Sensing Relay Kit for UVV Models

UPGRADE OPTIONS

RL-16	Add-on 36W 16" Lamp to upgrade the RM1-5WB
RL-12	Add-on 24W 12" Lamp to upgrade the RM1-5WB
RM1-5	Add-on remote 5" UVV Oxi unit to upgrade the RM1-16 or RM1-12



Lamp Reflector with Magnetic Mount
500489-12-MG (12"), 500484-16-MG (16")



Offset Duct Board Adapter Plate
500423-OS



Current Sensing Relay
FCS003

Note: The FCS003 Current Sensing Relay interlocks the UVC/UVV System with the furnace blower (this field installed option is recommended on all UVV installations).



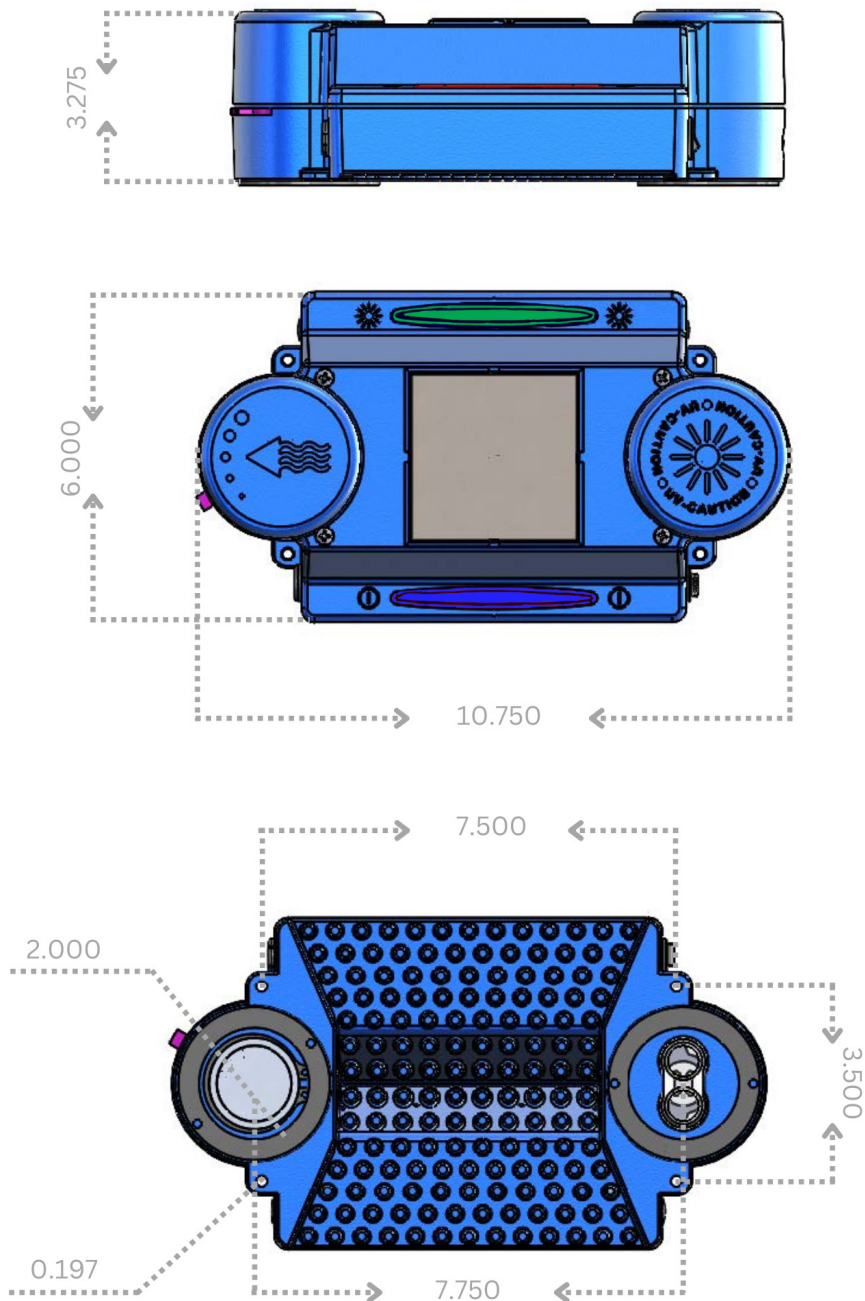
RM1-5
Add-on Remote 5" UVV for use with
RM1-12 & RM1-16



RL-12 (12") and RL-16 (16")
Add-on Remote UVC Lamps
for use with RM1-5WB

Website: ElevatedIndoorAir.com

Phone: (239)-ELE-VATE (353-8283)



Dimensions

Enclosure: 10.105" x 6.0" x 1.763" (25.7 cm x 15.2 cm x 4.5 cm)

Lamp Bulb (16"): 16" (40.6 cm) and 5" (12.7 cm)

Lamp Bulb (12"): 13" (33.0 cm) and 5" (12.7 cm)

Optional Mounting Plate: 13-3/8" x 8-3/8" x 1-1/2" (34 cm x 21.3 cm x 3.8 cm)

Clearances

Inside Duct Clearance (16"): 15-1/4" (38.7 cm)

Inside Duct Clearance (12"): 12-1/2" (31.7 cm)

UVC and UVV Lamp Opening Size: 2" (5.1 cm)

Weights

RM1 Ballast Housing: 3.55 lbs. (1.6 kg)

RM3 Ballast Housing: 5.2 lbs. (2.4 kg)

RM1 Housing (w/o ballast): 1.35 lbs. (0.6 kg)



Specifications subject to change without notice.
©2024 Dynamic Air Quality Solutions

Website: ElevatedIndoorAir.com

Phone: (239)-ELE-VATE (353-8283)

ELE-SPEC-802 06/24